

IBA JAX 2025 SS1000 Best of Florida



Ride materials provided to you include this Instructions Document, a set of waypoints files, and a Verification form for you to record info about you and details for each Stop (odo & time). Please print the Verification form, then fill in Stop details, either along the way, or when you return to the hotel. A filled-in form will expedite the Verification process.

This document identifies and describes all of the ride's required Stops. Included for each Stop is the following information: Stop #, name or title, street address or intersection, coordinates, *requirements in italics*, description, and an example photo.

To become a certified finisher of this ride, you must:

- start at one of the acceptable gas stations near the host hotel
- visit all Stops in numerical order (ascending or descending)
- meet the requirements of all Stops (photo, receipt, item, as specified)
- finish at one of the acceptable gas stations near the host hotel
- complete the final Stop's requirements before 24 hours since your ride start
- ride at least 1,000 miles start to finish, based on your odometer

Unless otherwise noted, all Stops are available anytime, and all times are in local time zone.

While planning routes in BaseCamp or Google Maps, we occasionally find that it is difficult to determine the absolute “shortest” or “quickest” route to visit all the Stops. However, on this ride, you will find that the shortest and quickest routes yield nearly identical mileage and time. You may choose any route for your ride.

The quickest route is about 1,052 miles, and this is what your certificate will state. Choosing “quickest” in your routing preferences should come close to the example route depicted above. This example route is about 43.9% or 461 miles on Interstate highways, about 10.9% (115 miles) on toll roads, and about 45.2% (476 miles) on other roads. The “quickest” route will follow Florida’s wonderful toll road system for at least part of the ride, so using a Sun Pass or compatible device could be advantageous.

For an early morning start, considering sunrise and sunset, riding in the counter-clockwise direction could be advantageous. However you may choose to ride in either direction.

Do not start the ride until you have verified that this document includes all pages. Each page is numbered. This is your responsibility.

In an emergency, or for assistance during the ride, or to notify us that you will not complete the ride, please call: **Michael Kneebone 773-909-9219**

Good luck! Donna & Jim Fousek, Co-Rallymasters

Acceptable gas stations in Jacksonville near the host hotel, for start & end receipts:

- (1) Sunoco at 30.1860, -81.6287, 10550 San Jose Blvd (0.3 road miles north)
- (2) Speedway at 30.1933, -81.6239, 10141 San Jose Blvd, (0.8 road miles north)
- (3) Shell at 30.2044, -81.6168, 9551 San Jose Blvd, (1.7 road miles north)
- (4) GATE at 30.2051, -81.6176, 9540 San Jose Blvd, (1.7 road miles north)

Starting information:

Near host hotel, Ramada Hotel and Conference Center
3130 Hartley Rd, Jacksonville, Florida
30.1824, -81.6273

Stop 1: Official ride start

Obtain a receipt from one of the acceptable gas stations near the host hotel. Take a photo of your starting receipt and odometer before you begin riding. Receipt info & odometer must be legible in the photo.



There is no official group start. You may start your ride at a date and time of your choice, but you must start your ride at one of the acceptable gas stations near the host hotel. Your ride officially starts at the station receipt’s date and time, and at your odometer reading there.

Stop 2: Carrabelle Beach, Florida

Wayside park along US-98/US-319
Closest address: 1873 US-98W, Carrabelle, Florida
29.8295, -84.6923



[Previously featured in the 2019 “Life’s a Beach” SS1000]

Take a photo of the beach at Carrabelle Beach (some signs call this wayside Sandy Beach - and it is) with at least one of the picnic sites in the photo (so we can tell you are at the right beach of course).

A beautiful stretch of beach to kick off this ride!

Note: The wayside road parallel to US-98 is one-way, from southwest to northeast, only about 700 ft long; wayside entrance is only at the southwest end.

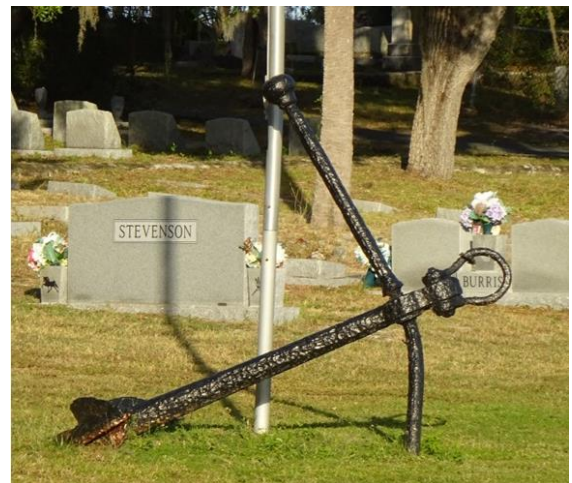
Stop 3: Cedar Key Cemetery

150 ft South of 12491 Gulf Blvd, Cedar Key, Florida
29.1458, -83.0415

[Previously featured in the 2021 “Anchors Aweigh” SS1000]

Take a photo of the anchor. If the gate is locked, we will accept a photo of the anchor from a distance.

The anchor is located just inside the Cedar Key Cemetery.



Stop 4: Seminole Casino

On Reservation Rd NE (County Rd 721), near Okeechobee, Florida
12.8 miles S of FL-70, 3.4 miles N of FL-78
27.0489, -81.0700

[Original casino previously featured in the 2023 “Snow Bird” SS1000]

Take a photo of the casino main entrance. It should look similar to the artist rendering provided below.

This Stop has been updated for your improved Snowbird Vacation experience with a completely new casino and entertainment center. We do not want to make any claims that this was only possible due to the increased business provided by us using it as a photo stop on previous rides, but it seems pretty obvious to us. I am sure the casino operator would deny it, but you be the judge. For those that stopped for the 2023 Snowbird Ride this is quite the upgrade at no additional cost to you. (The original casino is 2.7 miles north of the new location. If you cruise by, take a look to see the difference). Your IBA staff is always working hard behind the scenes to improve your ride experience.

A couple of issues with this stop though.
First issue: this site was visited by IBA staff on Dec 20, 2024, and this is what it looked like.

The new casino is scheduled to open Feb 2025 with the hotel booking system accepting reservations for Mar 1, 2025. With this information we are assuming they will be open for business.



Here is an artist rendering of the completed casino main entrance. This is what we want you to take a photo of.

Hopefully, this will be completed by the time you all are on the ride. We will accept photos that look a lot more like the artist rendering than the IBA staff photo of a pile of construction debris. Bear in mind that everyone’s photo should look alike as you will all be there on roughly the same day (unless you have decided to do this ride at a different date).



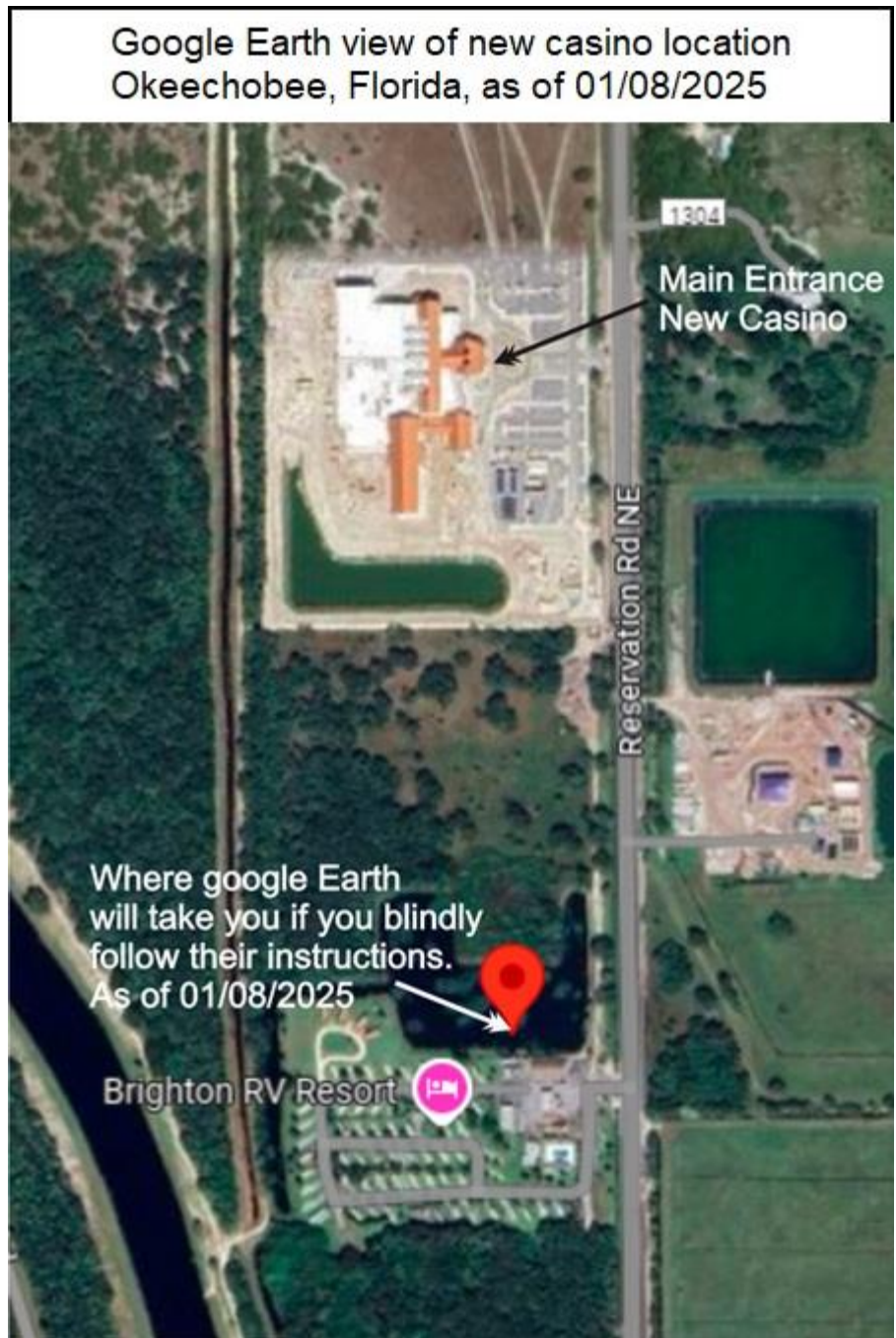
Second issue: Google Earth does not locate the casino's site with the *published* street address of 15005. As late as Jan 8 when entered, it looked like this. See if you can spot the problem.

If you blindly follow Google Earth to that street address, you end up in a pond 0.4 of a mile south of the actual casino. I did call the casino and actually spoke with the new hotel manager on Jan 8. She explained that I must be wrong as all the construction equipment has been delivered to the correct site. I explained that truck drivers are pretty sharp and probably see the construction site, the pond and say Google Earth is wrong and deliver it to the construction site. She did actually input the address into Google Earth, and I heard a gasp, then she says "you are right, how can that be" I explained she or someone from the casino could contact Google and this could be corrected.

Otherwise, they may be fishing cars and people out of the pond. Hopefully by the time you visit, Google Earth will actually guide you to the casino. IBA staff does not want to receive a call about a motorcyclist having ridden into the pond. Note that the GPS coordinates given above (27.0489, -81.0700) are correct. Either way the casino should be pretty easy to spot.

You have been warned.

Do not forget to visit the casino and take a chance to win some extra cash to help finance your stay in Florida.



Stop 5: Underground Shark Attack

11501 N Military Trail, Palm Beach Gardens, Florida
26.8484, -80.1061

[Previously featured in the 2022 “Shark Attack” SS1000]

Take a photo of the Mako Shark breaking through the pavement.

An 18-foot-long Mako shark statue bursts out of the plaza to eat any unsuspecting college students.



Stop 6: Surfer Girl statue

Located just east of City Hall across 2nd St N, in Latham Plaza
City Hall address is 11 3rd St N, Jacksonville Beach, Florida
30.2899, -81.3906

[Previously featured in the 2019 “Life’s a Beach” BB1500 and SS1000]

Take a photo of the Surfer Girl in the Plaza.

Jacksonville Beach – frequent start or end of the IBA 50CC.



Stop 7: Ending odometer

Complete your ride by obtaining a receipt from one of the acceptable gas stations (listed on page 2) near the host hotel. Using the same station as for the starting receipt may provide time stamp consistency. Check the receipt to ensure that it includes a Jacksonville location and the CORRECT time.

Take a photo of your ending receipt & odometer at the end of your ride. Receipt info and odometer must be legible in the photo.



Finish Check-In: Ride Verification

Host hotel: Ramada Hotel and Conference Center
3130 Hartley Rd, Jacksonville, Florida
30.1824, -81.6273

We will verify your ride. Bring your photos (camera or phone) and any other related items required to document your ride. You do not need to print the photos; we will view them on the camera or phone display. Also bring your **filled-in** Verification form, which was included in the ride materials provided to you.

At the event, Verification is available:

Friday, March 7, 2025, 10:00AM-2:00PM

In the Verification room, to the right of the front desk, through the double doors.

Otherwise, an application for ride certification must be submitted to IBA in the usual manner.